

IN THE REAR-VIEW MIRROR

SIR HENRY ROYCE A STATUE IN HIS LIFETIME



The life size statue in bronze of F. Henry Royce was exhibited at the 1922 Exhibition of the Royal Academy of Arts, London. The exhibition ran from 1 May to 7 August.

The catalogue entry for the 1922 Exhibition is shown below.

Prof. F. Derwent Wood, R. A. designed the statue.

Francis Derwent Wood (1871-1926) was professor of sculpture at the Royal College of Art from 1918 through to 1923. He was elected to the Royal Academy in 1920.

[Images, 'Rolls-Royce The Living Legend', Arcadia, California, Post Motor Books, 1962 and Royal Academy]

- 1428 Mrs. Gerald Mangan—half-figure,
bronze *E. Whitney-Smith*
- 1429 F. Henry Royce, Esq.—statue,
bronze. To be erected at the
Rolls-Royce Works, Derby
F. Derwent Wood, R.A.



The Inscription

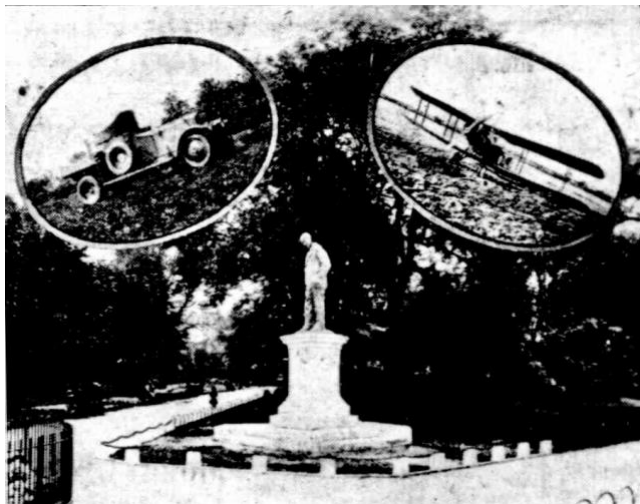
“F. Henry Royce, born 1863, at Alwalton, near Peterboro. Owing to misfortunes in childhood he was almost entirely self-educated. His work included the design and production of the Rolls-Royce Motor Cars of world-wide reputation, which were used for the most important work in the Great War; and also the design of the Rolls-Royce Aero Engines, of which a greater horsepower was employed by the allies than any other design. Aeroplanes with those engines made the first direct flight across the Atlantic in 16 hours, and the first flight from England to Australia. This statue was erected by the shareholders of Rolls-Royce Limited in 1923 at which date he was still serving the company as engineer-in-chief.”

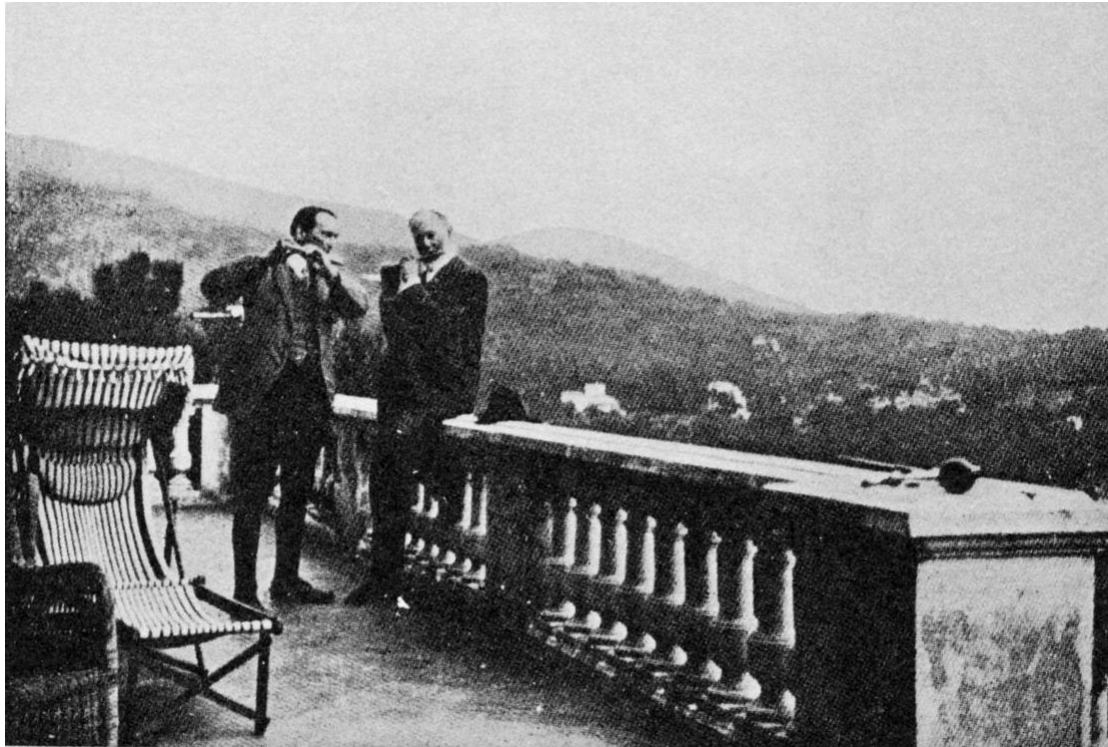


The statue was unveiled on 27 June, 1923, at Derby, England, by Lady Birkenhead in the presence of prominent people connected with aviation and motoring. Speeches were made by the Earl of Birkenhead, Lord Wargrave, the Duke of Sutherland, Under-Secretary for Air, and Hon. H. J. Thomas, representative from Derby in the House of Commons.

The Adelaide newspaper, 'The Register', 1 August 1923, published this image from the commemorative booklet of the unveiling. Superimposed are a Silver Ghost armoured car and the plane is a Bristol Fighter, references to the allied World War I victory.

[Information courtesy Tom Clarke.]





Prof. F. Derwent Wood, R. A., who designed the statue, is seen here on the left with Royce in the South of France. The flutes they are playing were hand made.

['Rolls-Royce The Living Legend', Arcadia, California, Post Motor Books, 1962]



Russell Rolls, Sir Henry Royce Foundation Chairman, took this photo in August 2019.

The statue is now located in front of Rolls-Royce, Moor Lane, Derby.

Compiled by David Neely,
Historical Consultant,
The Sir Henry Royce Foundation,
Australia, 2020.